

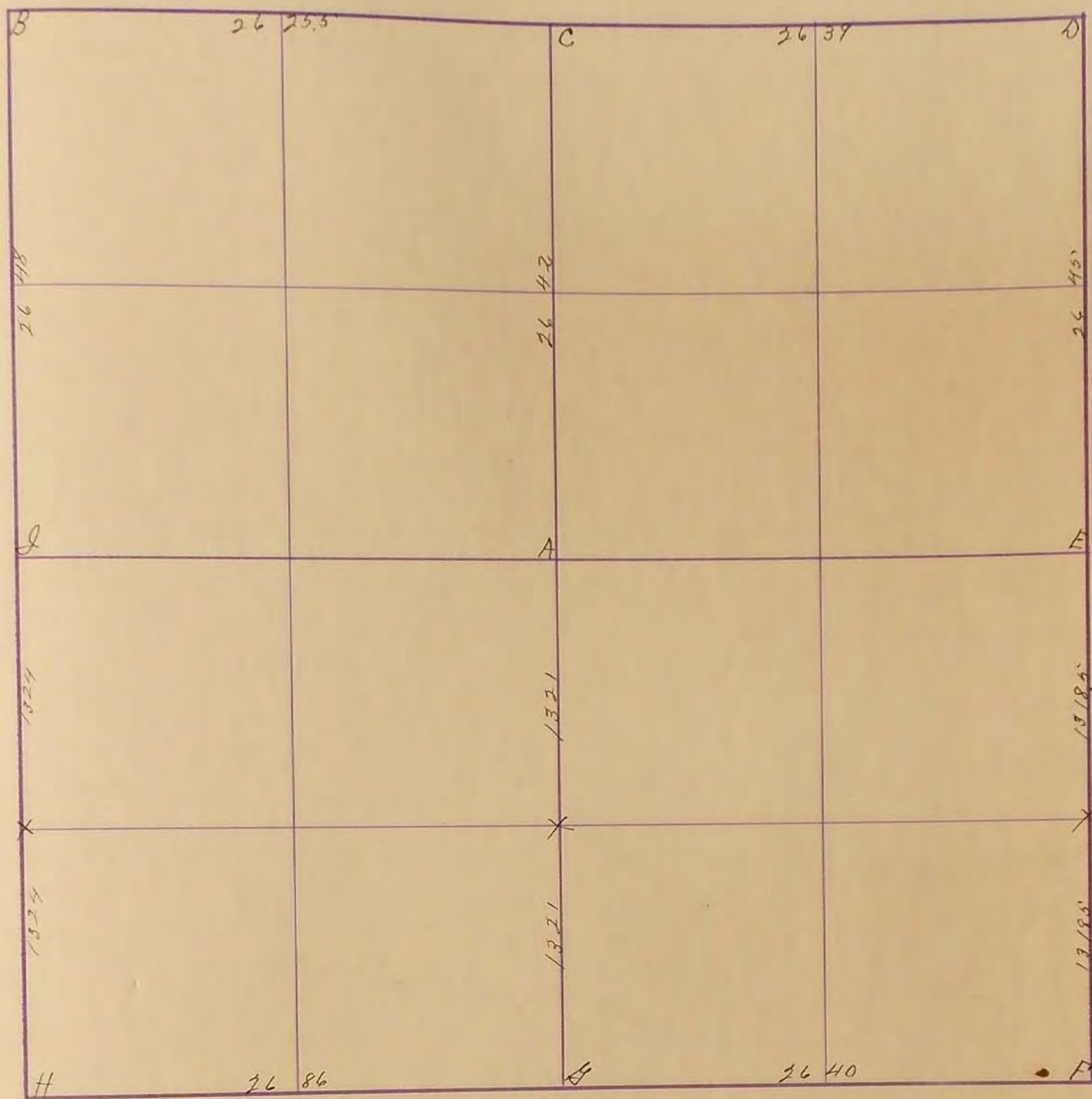
MURRAY COUNTY.

Section 19

Township 106

Range 41

10798 McGill-Warner Co., Blank Book Manufacturers, St. Paul.



Nov. 13-1901

- C. Stone 10x14x20 Gray
- D. Stone 13x13 bottom 25" long bottom 1/2 red Top Blue Gray
- E. Stone 6x8x14 Small stones under
- F. ...
- G. ... 16x16x20 split on top as by blast
- H. Limestone 13x13x14 Sov M.P. Gray Nipper head on top of limestone
- I. Stone 5x8x14 on each & West fence line
- X. Stone + 2 Bits N.T.S.

Sov. cor at A.

Stakes marked by previous survey B.C.D.E.

Established F.S.I.A.X.

J.H. Hasletenecraft

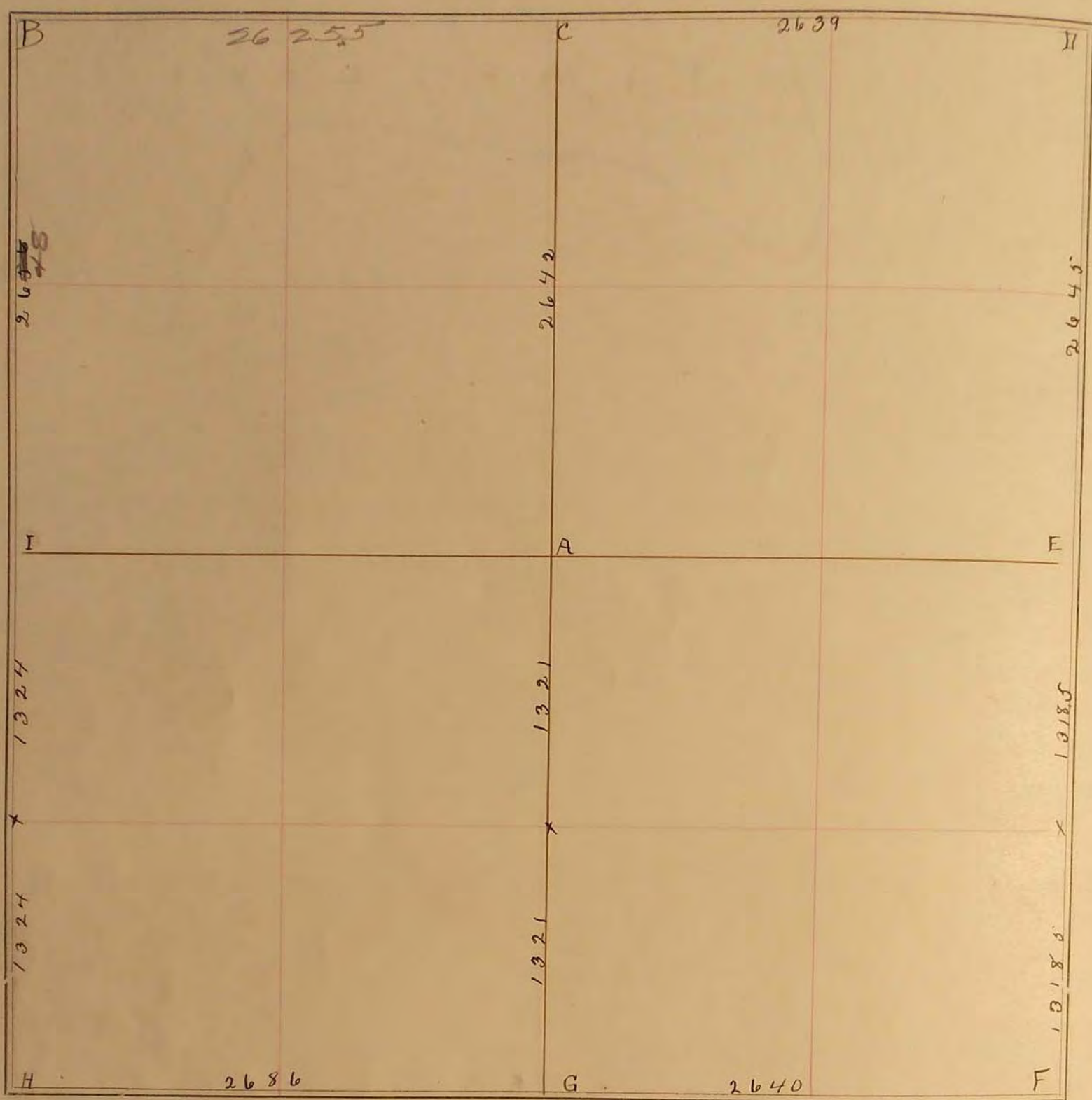
18
19
20
21
22
23
24
25
26
27
28
29
30
31
32
33
34
35
36

SURVEY No. _____

Section 19

Town 106

Range 44



FIELD NOTES.

NOV. 13, 1901.

C Stone 10x14x20 (grey)

D " 12x12 bottom 22" long bottom ^{1/4} red top blue grey.

E " 6x9x14 small stones under

F "

G " 16x16x10 split on top as by blast

H Lime stone 12x12x14. Gov. m. & p. Grey muffer hood on top of lime stone

I Stone 5x8x11 on east + west from line

X Stones + 2 pits n + s.

Gov cor at H

Stakes marked by previous survey B, C, D, E.

Established F, G, I, X.

J. W. Washburn